

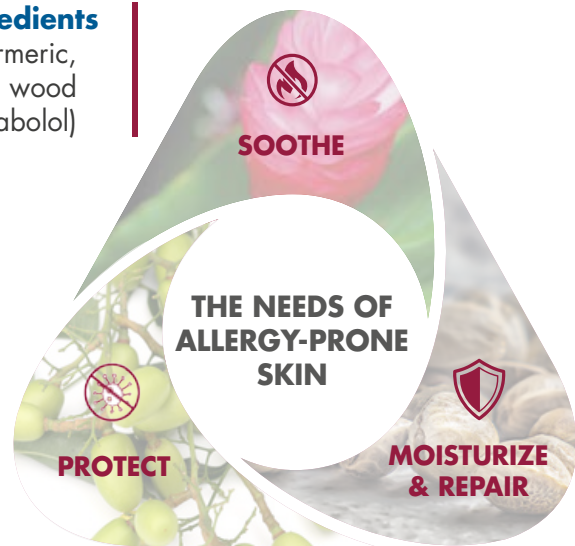
ATOP 7[®] SPOT-ON SOOTHING SPOT-ON



1 pipette per week as long as necessary

Soothing ingredients

Synergy of essential oils rich in turmeric, wintergreen, shiu wood Candeia tree extract (bisabolol)



Purifying and antioxidant ingredients

Neem leaf extract
Tea tree essential oil
Plant-based vitamin E

Skin barrier repairing ingredients

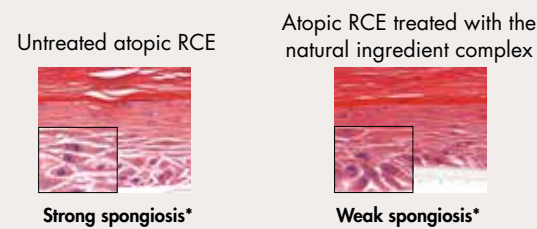
Hemp and wheat seed oils: rich in EFA
Wheat phytoceramides

First natural spot-on for allergy-prone skin
Can substitute oral intake of essential fatty acids

Ex vivo evaluation of Dr. C. Darmon-Hadjaje et al.¹

Model of atopic dermatitis on Reconstructed Canine Epidermis (RCE) stressed by cytokines

Morphological analysis



Increase of hydration markers
Filaggrin: **+52%**

Reduction of inflammatory markers
Interleukin-8: **-25%**

*Spongiosis = cellular dissociation

Evaluation of Drs. E. Vidémont & E. Bensignor²

Benefits of a multimodal management

	Lokivetmab alone	Lokivetmab + ATOP 7 [®] spot-on & ATOP 7 [®] Shampoo
CADLI score	-47%*	-69%*
Pruritus score	-55%*	-72%*
Cosmetic score	+40%***	+71%***
Time before the 2 nd injection	33 days	37 days

Scores at D31 - Statistical significance * p<0.05, *** p<0.001

ATOP 7[®] SPRAY SOOTHING CARE

Once to several times a day

INGREDIENTS

Soothing:

- Caper extract
- Candeia tree extract (bisabolol)
- Rice extract (oryzanol)
- Reed and Poria cocos extracts

Moisturizing and skin barrier repairing:

- Reed and Poria Cocos extracts
- PCA
- Hemp and neem seed oils, rich in EFA

Purifying:

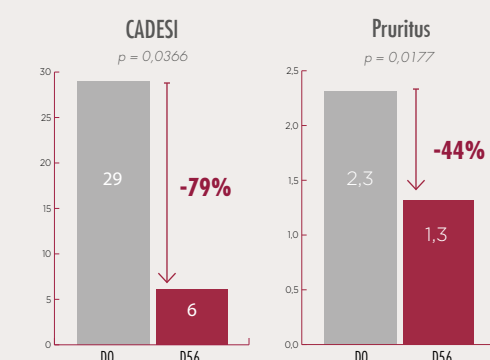
- Tea tree and cajeput essential oils
- Neem oil

Rapid absorption | Protective "second skin effect" film

Evaluation of Pr. R. Mueller & Dr. S. Tretter³

Protocol

- 7 dogs with mild to moderate atopic dermatitis
- Application of ATOP 7[®] Spray once a day
- Duration: 2 months
- Evaluation criteria: CADESI score on 46 body sites (from 0 to 10) and pruritus score (from 0 to 10)



A case of iatrogenic hyperadrenocorticism in a dog⁴



© Dr. M.C. Codreages

ATOP 7[®] HYDRA CREAM MOISTURIZING FLUID CREAM

Once to twice a day

INGREDIENTS

Moisturizing:

- Hemp seed oil, rich in EFA
- Plant-based squalane
- Sodium PCA
- Plant-based glycerin

Protecting "2nd skin effect": Red microalgae extract

Bittering to discourage licking: Citrus essential oils

Suitable for very dry localized alopecic lichenified areas

Evaluation of Dr. O. Fantini & Pr. D. Pin⁵

ATOP 7[®] MAX HYDRA PROTECTIVE MOISTURIZING MIST

Once to twice a day

INGREDIENTS

Moisturizing:

- Natto gum
- Plant-based glycerin

Skin flora regulating:

- Pre & probiotic complex

Protective and skin barrier repairing:

- Red microalgae extract
- Hemp seed oil, rich in EFA

Mist effect for an easy & homogeneous application on a large surface

Evaluation of Dr. L. Fabriès⁶

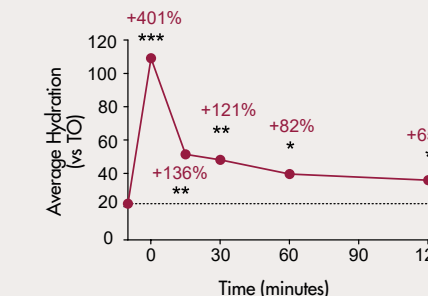
Protocol

- 13 dogs and cats
- Hydration measurement using a corneometer at T0, 15 min, 30 min, 60 min and 120 min

- Hydration level after application of ATOP 7[®] MAX hydra
- Hydration level at T0

Results

*** p<0.001, ** p<0.1, * p<0.05



A case of dry skin and hair loss in a Labrador⁷



© Drs. N. & P. Hensele

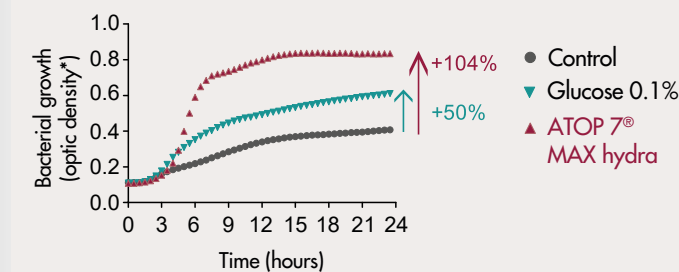
In vitro evaluations⁸

Effect on the beneficial flora

Strain tested: *Staphylococcus epidermidis*

Evolution of *S. epidermidis* during 24h

- Growth analysis of *S. epidermidis* alone (control), in contact with glucose (0.1%) and in contact with ATOP 7[®] MAX hydra (1%)



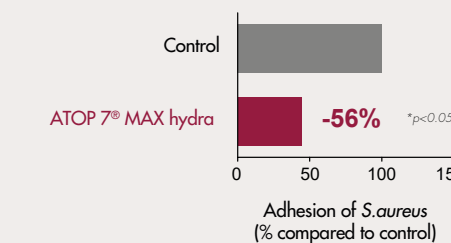
*Optical density at 600 nm for bacterial quantification

Effect on undesirable flora

Strain tested: *Staphylococcus aureus*

Model of atopic dermatitis on Reconstructed Human Epidermis (RHE) stressed by cytokines

- Analysis of *S. aureus* adhesion on 5 control RHE & 5 RHE treated with ATOP 7[®] MAX hydra (1%)



ATOP 7® WIPES

SOOTHING CLEANSER

As often as necessary

- INGREDIENTS**
- Cleansing:**
 - Green apple lipoamino acids
 - Saponaria extract
 - Soothing:**
 - Candeia tree extract (bisabolol)
 - Synergy of essential oils rich in turmeric, lemon tea tree, shiu wood...
 - Moisturizing and skin barrier repairing:**
 - Plant-based glycerin
 - Hemp and wheat seed oils, rich in EFA
 - Wheat phytoceramides

✓ Ideal for hard-to-reach areas - Practical travel pack - Fibers of 100% natural origin

🔬 Ex vivo study of Dr. C. Darmon-Hadjaje *et al.*¹



ATOP 7® MOUSSE

SOOTHING CLEANSING CARE

Twice a week

- INGREDIENTS**
- Cleansing and deodorizing:**
 - Green apple lipoamino acids
 - Saponaria extract
 - Lichen extract
 - Soothing:**
 - Lemon tea tree essential oil
 - Caper extract
 - Candeia tree extract (bisabolol)
 - Moisturizing and cutaneous barrier repairing:**
 - Plant-based glycerin
 - PCA
 - Hemp seed oil, rich in EFA

✓ Ease of use | Extends the time between shampoos

🔬 Evaluation of Dr. E. Bensignor⁹



ATOP 7® SHAMPOO

SOOTHING CREAM-SHAMPOO

Once to several times a week

- INGREDIENTS**
- Cleansing:**
 - Agents from coconut and plant-based glucose
 - Soothing:**
 - Wintergreen and lemon tea tree essential oils
 - Caper extract
 - Moisturizing and cutaneous barrier repairing:**
 - Calcium PCA
 - Osidic complex (association of sugars)
 - Hemp seed oil, rich in EFA

✓ Creamy and smooth texture

🔬 Evaluation of Drs. E. Vidémont & E. Bensignor²



WHY INTEGRATE ATOP 7® LINE IN YOUR SKIN CARE PROTOCOL FOR THE MANAGEMENT OF IRRITATED OR ALLERGY-PRONE SKIN

- To help **soothe and hydrate the skin** in addition to medicated treatments
- To help **improve natural skin defenses** by promoting **cutaneous barrier repair**
- To efficiently and gently **cleanse** the skin and to diminish the contact with allergens

DURING OUTBREAKS

Immunomodulating treatments
(cyclosporin, steroids, oclacitinib, lokivetmab...)



In association with the ATOP 7® line

MAINTENANCE



1. C. Darmon-Hadjaje *et al.*, Effect of a natural spot-on based on phytoceramides, plant-extracted essential fatty acids and essential oil on reconstructed canine epidermis. Short communication 2021 ESVD. Abstract in Veterinary Dermatology 2021, 32(5), p.425.
2. E. Bensignor, E. Vidémont, Weekly topical therapy based on plant extracts combined with lokivetmab in canine atopic dermatitis. Poster 2020 WCVD and article in Veterinary Dermatology, 2022, 33(1), p.68-71.
3. S. Treiter, R.S. Mueller, The influence of topical unsaturated fatty acids and essential oils on normal and atopic dogs. JAAHA: July/August 2011, Vol. 47, No. 4, p.236-240.
4. M-C. Cadiergues, An eleven-year-old intact female Coton de Tuléar presenting with cutaneous lesions associated with iatrogenic hyperadrenocorticism. Application of ATOP 7® Spray+ twice a day as a unique care during 3 weeks.
5. O. Fantini & D. Pin, Evaluation of the hydrating effect of ATOP 7® Hydra Cream in a tapestripping model in dogs.
6. L. Fabrés, Evaluation of skin hydration in dogs and cats after application of ATOP 7® MAX hydra.
7. N. Hensel & P. Hensel, A case of skin dryness in a Labrador.
8. Evaluation of the impact of ATOP 7® MAX hydra on the skin flora. Study carried out by an independent specialized laboratory.
9. E. Bensignor *et al.*, Use of antipruritic and rehydrating foams on localized lesions of atopic dermatitis in dogs: a small-scale pilot and comparative double-blinded study. Veterinary Dermatology 2018, 29(5), 446e150.



Training E-learning
www.dermoscent-training.com

Scientific support
Veterinary Corner
www.dermoscent.com



ATOP 7®

— topical solutions —



INGREDIENTS OF NATURAL ORIGIN TO HELP SOOTHE AND REPAIR THE ALLERGIC SKIN OF DOGS AND CATS



TRENDSETTING INNOVATIONS SINCE 2003



SCIENTIFICALLY PROVEN EFFICACY



EASE OF USE FOR HIGH COMPLIANCE



Naturally efficient

