



ICADA* GUIDELINES FOR THE MANAGEMENT OF ATOPIC PATIENTS :

- ✓ Allergen avoidance
- ✓ Dust mite control
- ✓ Reduction of pruritus and skin lesions
- ✓ Control of secondary infections
- ✓ Improved skin care (especially reinforcement of the skin barrier) and hygiene
- ✓ Allergen-specific immunotherapy



Treatment of canine atopic dermatitis: 2015 updated guidelines from the *International Committee on Allergic Diseases of Animals (ICADA)
Thierry Olivry, Douglas J DeBoer, Claude Favrot, Hilary A Jackson, Ralf S Mueller, Tim Nuttall, Pascal Prélard

Soothing and hydrating shampoo

ATOP 7® Shampoo



Cleansing & deodorizing

Gentle cleansing base (glucose from vegetable origin, coconut oil)



Soothing

Caper flower bud extract, wintergreen and lemon tea tree essential oils

Hydrating and skin barrier support

Osidic complex, calcium PCA, hemp seed oil: rich in EFA

Once to several times a week

Simple-blinded controlled study ¹



- Injection of lokivetmab alone (Cytopoint®, Zoetis) or with weekly application of **ATOP 7® spot-on & ATOP 7® Shampoo**

CADLI
-69%

Pruritus
-72%

Lead time before the 2nd injection of lokivetmab:

Lokivetmab alone **33** days

37 days Lokivetmab + ATOP 7® spot-on and ATOP 7® Shampoo

✓ The power of a shampoo with the softness of a cream

Rinse-free soothing cleanser

ATOP 7® Mousse



Cleansing & deodorizing

Lipoamino acids of green apple, saponaria root extract, lichen extract



Soothing

Caper flower bud extract, bisabolol, lemon tea tree essential oil

Hydrating and skin barrier support

Plant-based glycerin, PCA, hemp seed oil: rich in EFA

As often as necessary
Alone or as a complement to shampoo therapy

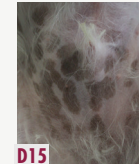
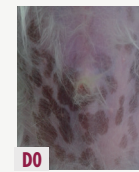
Study Dr. Bensignor *et al.* ²



- Twice a week during 2 weeks

CADLI
-42%

Pruritus
-33%



A case of canine atopic dermatitis ³
© Dr. J. Mohler

✓ Rinse-free = easy to use for more compliance

Soothing cleansing wipes

ATOP 7® Wipes



Cleansing & deodorizing

Lipoamino acids of green apple, saponaria root extract



Soothing

Essential oil synergy: turmeric, wintergreen, shiu wood + bisabolol

Hydrating and skin barrier support

Wheat phytoceramides, hemp and wheat seed oils: rich in EFA, plant-based glycerin

As often as necessary

🎯 Skin folds, interdigital spaces...

Open study ⁴

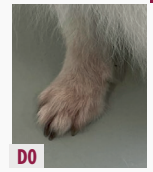


- Once a day during 20 days

Erythema
-33%

Pruritus
-48%

Skin dryness
-33%



© Pauline Rouvier

✓ Handy & ideal for hard-to-reach or localized areas

¹ E. Bensignor, E. Vidémont, Topical therapy with a spot-on and a shampoo containing essential fatty acids and other natural extracts increases the efficacy of Lokivetmab in canine atopic dermatitis and delays disease flares: a single-blinded, randomized, controlled study. Poster WCVD 2020.
² E. Bensignor and L. Fabrière, Use of antipruritic and rehydrating foams on localized lesions of atopic dermatitis in dogs: a small-scale pilot and comparative double-blinded study. Veterinary Dermatology, 2018 Oct;29(5):446-e150
³ JL Mathet, Multimodal management of an atopic dog with ciclosporine and a mousse.
⁴ Open study on the use of ATOP 7® wipes in atopic dogs (unpublished data)
⁵ S. Tretter, RS. Mueller, The influence of topical unsaturated fatty acids and essential oils on normal and atopic dogs. JAAHA: July/August 2011, Vol. 47, No. 4, p.236-240.
⁶ M.-C. Cadiergues, An eleven-year-old intact female Coton de Tuléar presenting with cutaneous lesions associated with iatrogenic hyperadrenocorticism. Application of ATOP 7® Spray+ twice a day as a unique care during 3 weeks.
⁷ Evaluation of the impact of ATOP 7® Hydra Spray on the skin flora. Study carried out by an independent specialized laboratory.
⁸ N. Hensel & P. Hensel, A case of skin dryness in a Labrador.
⁹ M. Catarino, A case of auricular lichenification in an atopic dog.



Atopic dermatitis



ATOP 7® spot-on

To help repair the skin barrier and soothe

Hydrating and skin barrier repairing

Hemp and wheat seed oils, rich in EFA, wheat phytoceramides

Soothing

Essential oil synergy: turmeric, wintergreen, shiu wood + bisabolol



Pruritus

ATOP 7® Spray

To help soothe pruritus and irritation



Soothing

Caper extract, bisabolol & oryzanol, poria cocos, reed extract

Hydrating and skin barrier support

PCA, hemp and neem seed oils: rich in EFA

Purifying

Cajeput essential oil



Once to several times a day

🎯 Localized areas

Study Pr. Mueller *et al.*⁵

- Once a day during 2 months

A case of iatrogenic hyperadrenocorticism in a dog⁶

🚫 CADESI -79%

🐾 Pruritus -44%



© Dr. W.C. Cofer/gues

✓ « SOS care » for a soothed skin



Skin dryness

(due to atopic dermatitis, climate conditions or post-treatments like chlorhexidine shampoos)

ATOP 7® MAX hydra

To hydrate the skin & help regulate skin flora



Hydrating and skin barrier support

Natto gum, vegetable glycerin, hemp seed oil: rich in EFA

Skin flora balance

Pre & probiotic complex

Mist texture ideal for furry pets



Once or twice a day

🎯 Whole body

In vitro evaluation⁷

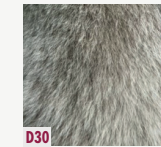
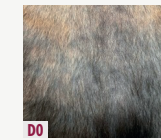
- Strains tested :

Beneficial flora = *S. Epidermidis*
Undesirable flora = *S. aureus*

Beneficial flora +104%

Undesirable flora -56%

A case of dry skin and hair loss in a Labrador⁸



© Dr. N. & P. Hensef

✓ Unique skin hydration & balance effect



Localized skin dryness, lichenification

ATOP 7® Hydra Cream

To moisturize and bring comfort



Hydrating and skin barrier support

Squalane of vegetable origin, sodium PCA, glycerin from vegetable origin, hemp seed oil: rich in EFA



Once or twice a day

🎯 Localized alopecic areas

Clinical case Dr. Catarino⁹

- Once a day during 3 weeks



© Dr. M. Catarino

✓ For skin comfort